



motoalliance

22000 Industrial Blvd, Rogers, MN 55374 / 1-866-527-7637
www.motoalliance.com

Thermostat Bypass Kit

Type 101

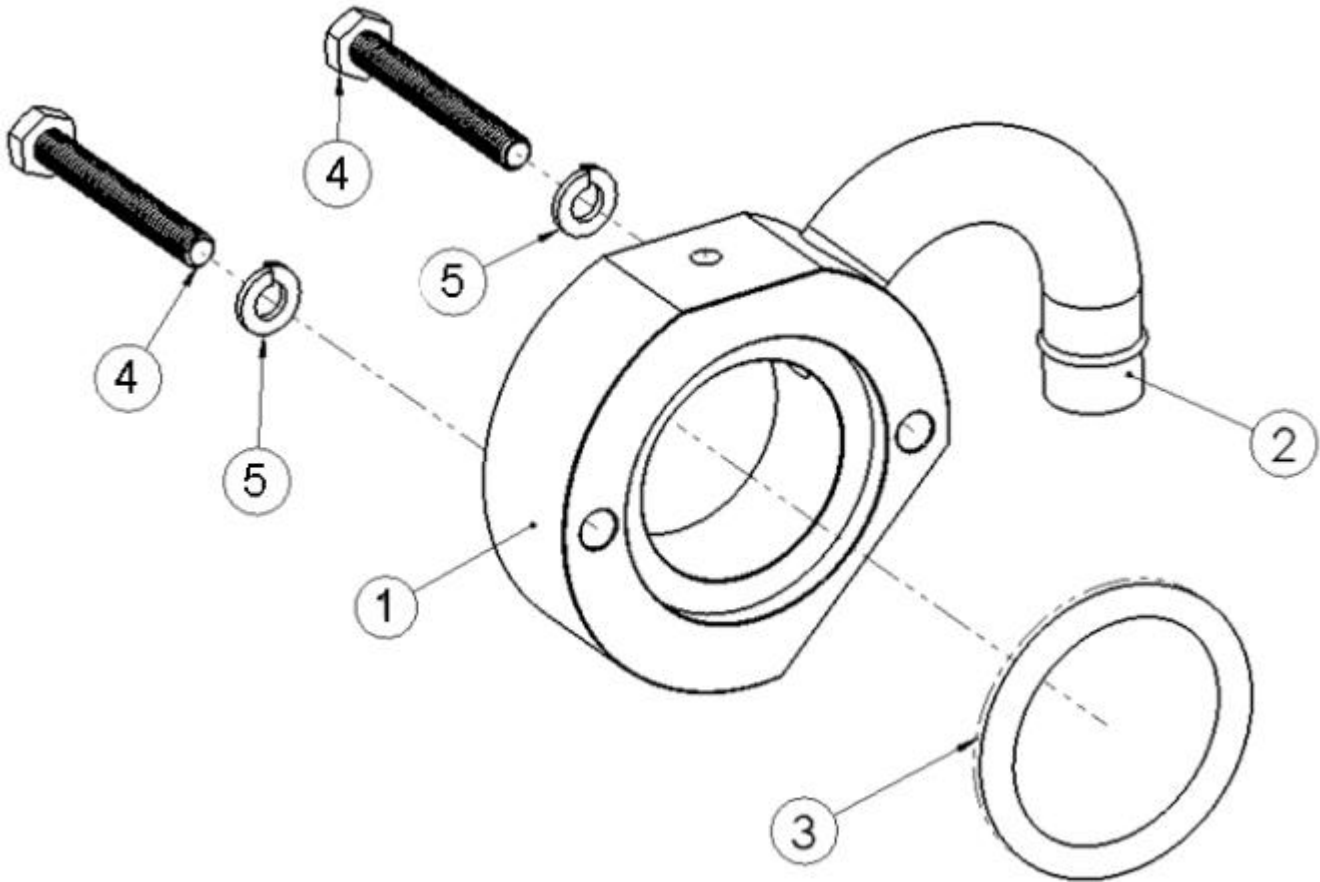
Thank you for purchasing our Firestorm Thermostat Bypass Valve. Once your vehicle is warmed up, the Thermostat Bypass Valve will cause your heater system to provide consistent heat that is independent of the thermostat position.

Note: When working on your vehicle's coolant system, always ensure that the engine is cold. Neglecting to do this may result in significant burns.

**Firestorm Heater Bypass Kit
HT-BP101**

Please verify that all hardware and parts are included in your package.

Kit Contents:



Item	Description	Qty
1	Thermostat Bypass Housing Type 201	1
2	5/8" Outlet	1
3	2" O-Ring R1000-326 www.marcorubber.com	1
4	M6 x 45mm SS HH Bolt	2
7	M6 SS Lock Washer	2
8	8 Feet of 5/8" Coolant Hose (Not shown)	8
9	#10 SS Hose Clamps (Not Shown)	1

INSTALLATION:

- 1) Remove the passenger seat and set it aside. Place a bucket under the vehicle, below the Thermostat to capture any coolant that pours out in Step #2.
- 2) Locate the vehicle's Thermostat and loosen the two M6 Hex Bolts that hold the Thermostat to the engine block as shown below. **Note: Make sure the vehicles engine is COLD and always wear safety glasses. Do not proceed if the engine is hot or warm.**



Figure 1

- 3) After the coolant stops flowing out of the Thermostat, completely remove the M6 Bolts and set aside the Thermostat Housing and Thermostat. **Note: the Thermostat is free floating inside the housing and can fall out.**
- 4) Locate the M6 x 45mm Stainless Steel Hex Bolts in the hardware kit and insert them through the Thermostat Housing and Thermostat Bypass Housing as shown in Figure 2. Before attaching the Bypass Housing to the engine block, ensure that the 2" O-ring is seated evenly in the machined recess of the Bypass Housing. Be sure that the Thermostat is still installed in the Thermostat Housing (part removed in Steps #2 and #3).



Figure 2

- 5) Press the assembly against the engine block, align the M6 Bolts with the threaded holes in the engine block. Begin threading the M6 bolts by hand. Take extra care to ensure that the M6

Bolts do not become cross threaded into the engine block. Tighten the bolts and lock washers to a snug fit; do not apply excessive force to these bolts.

- 6) Install the M6 x 16mm Stainless Steel Hex Bolt and Copper Crush Washer to the bleeder hole at the top of the Bypass Housing.
- 7) Install the 5/8" Heater Hose to the curved aluminum spout and secure it with the included Stainless Steel Hose Clamp, as shown in Figure 3
- 8) Ensure all bolts are securely fastened. Attached 5/8" Coolant hose to heater system. Add coolant and bleed any air from the system per the manufacturers recommended procedure.



Figure 3